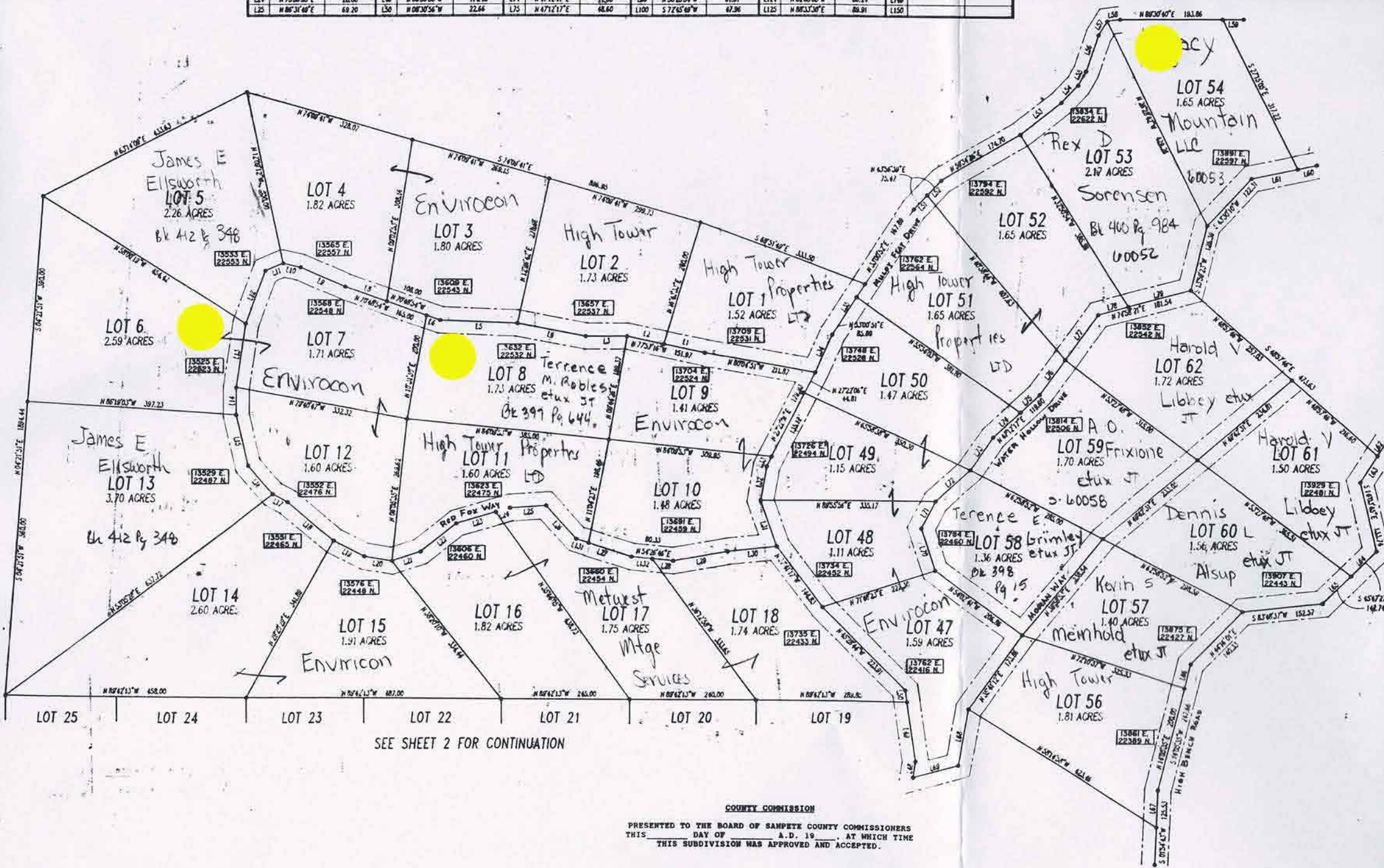


L21	N 72°17'30"E	57.50	1.66	N 60°35'11"E	31.82	L71	N 27°53'37"E	57.56	L86	N 145°25'56"W	58.36	L101	N 88°33'30"E	68.91	L115
L22	N 57°23'50"E	86.07	1.47	N 83°22'45"E	114.85	L72	N 48°03'40"E	90.06	L87	N 48°03'35"W	71.17	L102	N 77°56'04"W	66.04	L116
L23	N 73°56'53"E	77.08	1.48	N 09°04'46"E	30.58	L73	N 34°36'25"E	74.58	L88	N 50°25'34"W	40.00	L103	N 86°06'46"E	58.34	L117
L24	N 73°56'53"E	28.00	1.48	N 08°30'56"W	114.45	L74	N 47°21'17"E	71.00	L89	N 50°25'34"W	61.57	L104	N 82°03'05"W	86.24	L118
L25	N 86°31'40"E	68.20	1.50	N 08°30'56"W	22.66	L75	N 47°21'17"E	48.60	L90	S 72°45'40"W	47.96	L105	N 88°33'30"E	88.91	L119



SEE SHEET 2 FOR CONTINUATION

COUNTY COMMISSION
 PRESENTED TO THE BOARD OF SANPETE COUNTY COMMISSIONERS
 THIS _____ DAY OF _____ A.D. 19____, AT WHICH TIME
 THIS SUBDIVISION WAS APPROVED AND ACCEPTED.
 ATTEST: SANPETE CO. CLERK CHAIRMAN, SANPETE CO. COMM.