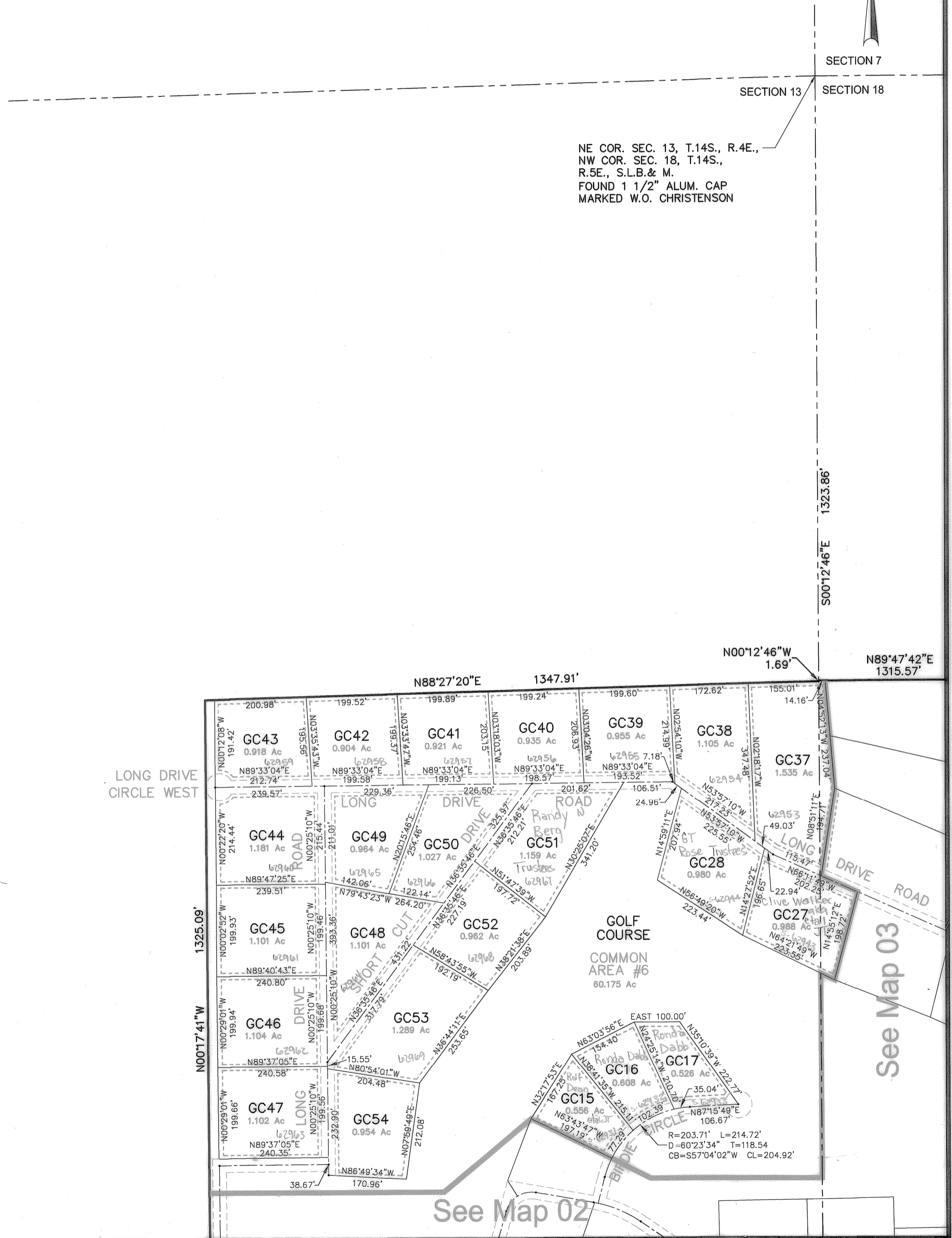
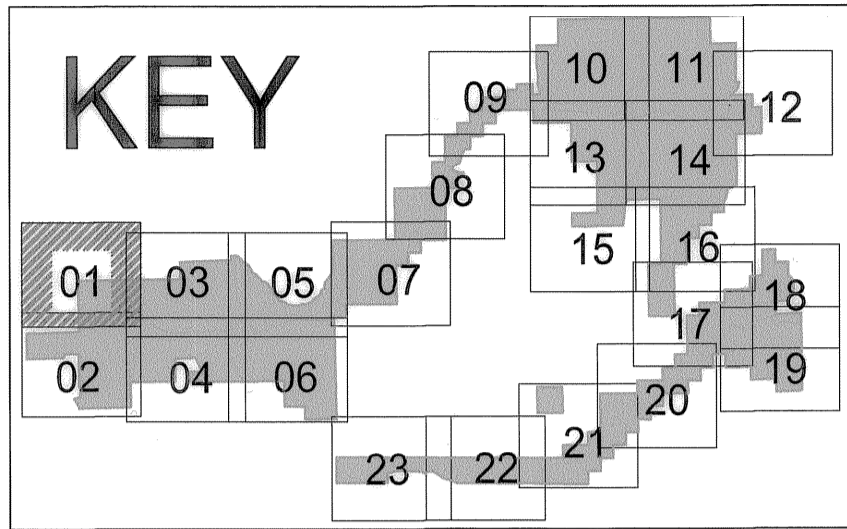
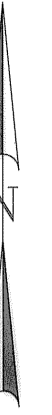


Skyline Mountain Resort Subdivision

Located in Section 13, T.14 S., R.4 E., &
 Sections 8, 9, 10, 15, 16, 17, 18, 20 & 21, T.14 S., R.5 E., S.L.B. & M.
 Sanpete County, Utah
 2014

Map 01



REVISIONS	INITIAL AND DATE	NOTES

NOTES

U.S.T.C. approval Date:

PLAT DEPARTMENT
 SANPETE COUNTY, UTAH

Section 13 T 14S R 4E book page
 Section 18 T 14S R 5E
 drawn by: BLL date: 12/14 scale: 1"=200'