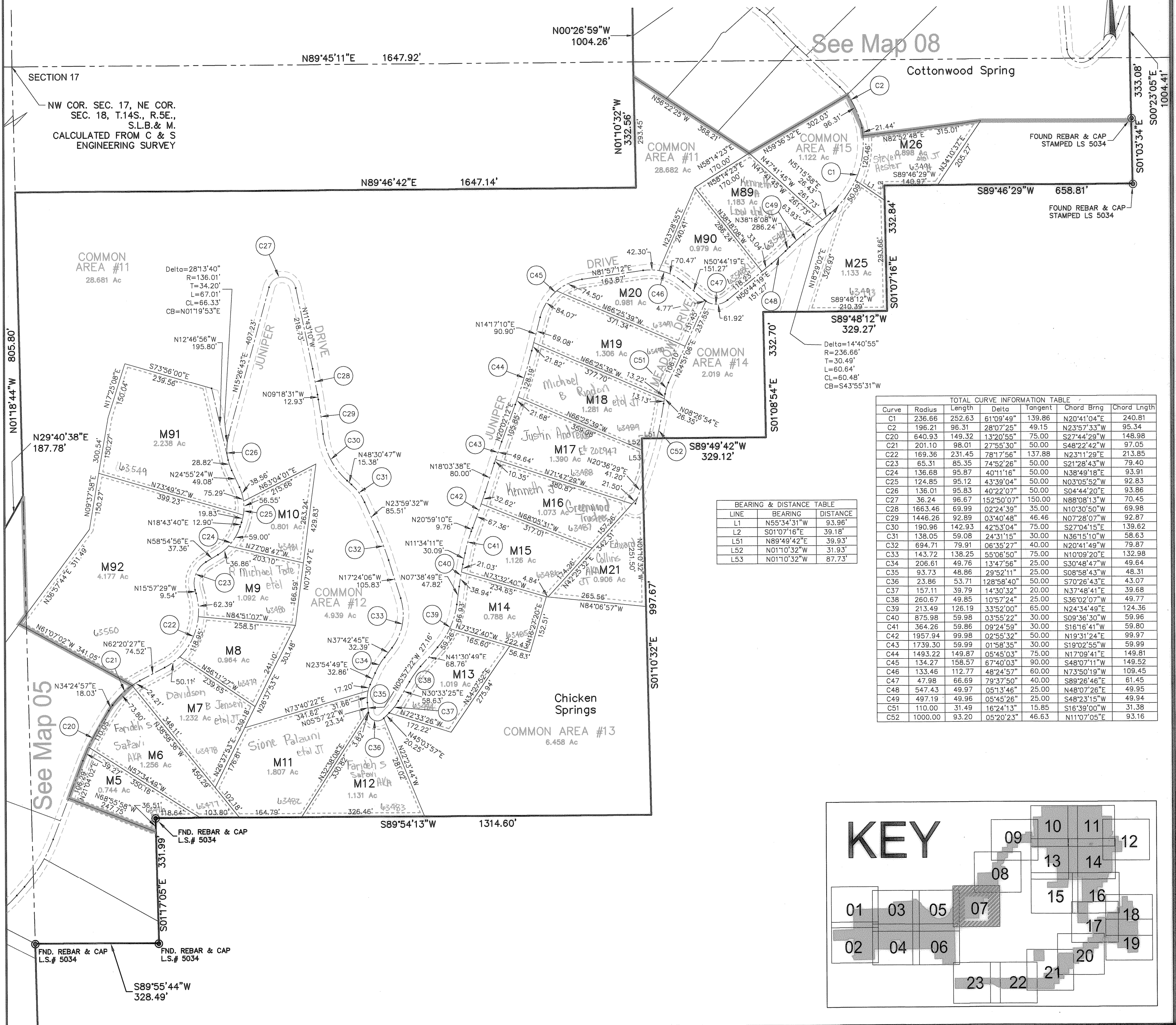
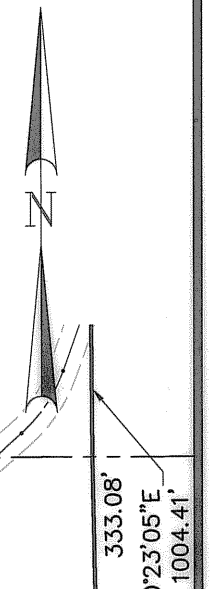


Skyline Mountain Resort Subdivision

Located in Section 13, T.14 S., R.4 E., &
 Sections 8, 9, 10, 15, 16, 17, 18, 20 & 21, T.14 S., R.5 E., S.L.B. & M.
 Sanpete County, Utah
 2014

Map 07

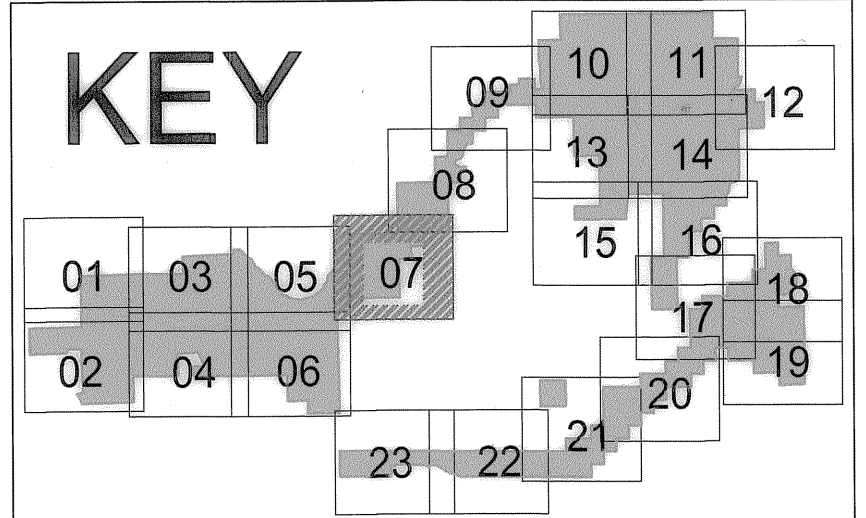


BEARING & DISTANCE TABLE

LINE	BEARING	DISTANCE
L1	N55°34'31"W	93.96'
L2	S01°07'16"E	39.18'
L51	N89°49'42"E	39.93'
L52	N01°10'32"W	31.93'
L53	N01°10'32"W	87.73'

TOTAL CURVE INFORMATION TABLE

Curve	Radius	Length	Delta	Tangent	Chord Brng	Chord Length
C1	236.66	252.63	61°09'49"	139.86	N20°41'04"E	240.81
C2	196.21	96.31	28°07'25"	49.15	N23°57'33"W	95.34
C20	640.93	149.32	13°20'55"	50.00	S27°44'29"W	148.98
C21	201.10	98.01	27°55'30"	50.00	S48°22'42"W	97.05
C22	169.36	231.45	78°17'56"	137.88	N23°11'29"E	213.85
C23	65.31	85.35	74°52'26"	50.00	S21°28'43"W	79.40
C24	136.68	95.87	40°11'16"	50.00	N38°49'18"E	93.91
C25	124.85	95.12	43°39'04"	50.00	N03°05'52"W	92.83
C26	136.01	95.83	40°22'07"	50.00	S04°44'20"E	93.86
C27	36.24	96.67	152°50'07"	150.00	N88°08'13"W	70.45
C28	1663.46	69.99	02°24'39"	35.00	N10°30'50"W	69.98
C29	1446.26	92.89	03°40'48"	46.46	N07°28'07"W	92.87
C30	190.96	142.93	42°53'04"	75.00	S27°04'15"E	139.62
C31	138.05	59.08	24°31'15"	30.00	N36°15'10"W	58.63
C32	694.71	79.91	06°35'27"	40.00	N20°41'49"W	79.87
C33	143.72	138.25	55°06'50"	75.00	N10°09'20"E	132.98
C34	206.61	49.76	13°47'56"	25.00	S30°48'47"W	49.64
C35	93.73	48.86	29°52'11"	25.00	S08°58'43"E	48.31
C36	23.86	53.71	128°58'40"	50.00	S70°26'43"E	43.07
C37	157.11	39.79	14°30'32"	20.00	N37°48'41"E	39.68
C38	260.67	49.85	10°57'24"	25.00	N36°02'07"W	49.77
C39	213.49	126.19	33°52'00"	65.00	N24°34'49"E	124.36
C40	875.98	59.98	03°55'22"	30.00	S09°36'30"W	59.96
C41	364.26	59.86	09°24'59"	30.00	S16°16'41"W	59.80
C42	1957.94	99.98	02°55'32"	50.00	N19°31'24"E	99.97
C43	1739.30	59.99	01°58'35"	30.00	S19°02'55"W	59.99
C44	1493.22	149.87	05°45'03"	75.00	N17°09'41"E	149.81
C45	134.27	158.57	67°40'03"	90.00	S48°07'11"W	149.52
C46	133.46	112.77	48°24'57"	60.00	N73°50'19"W	109.45
C47	47.98	66.69	79°37'50"	40.00	S89°26'46"E	61.45
C48	547.43	49.97	05°13'46"	25.00	N48°07'26"E	49.95
C49	497.19	49.96	05°45'26"	25.00	S48°23'15"W	49.94
C51	110.00	31.49	16°24'13"	15.85	S16°39'00"W	31.38
C52	1000.00	93.20	05°20'23"	46.63	N11°07'05"E	93.16



REVISIONS	INITIAL AND DATE	NOTES	U.S.T.C. approval Date:	PLAT DEPARTMENT SANPETE COUNTY, UTAH	Section 17 T14S.R.5E.	book page

drawn by: BLL date: 12/14 scale: 1"=200'