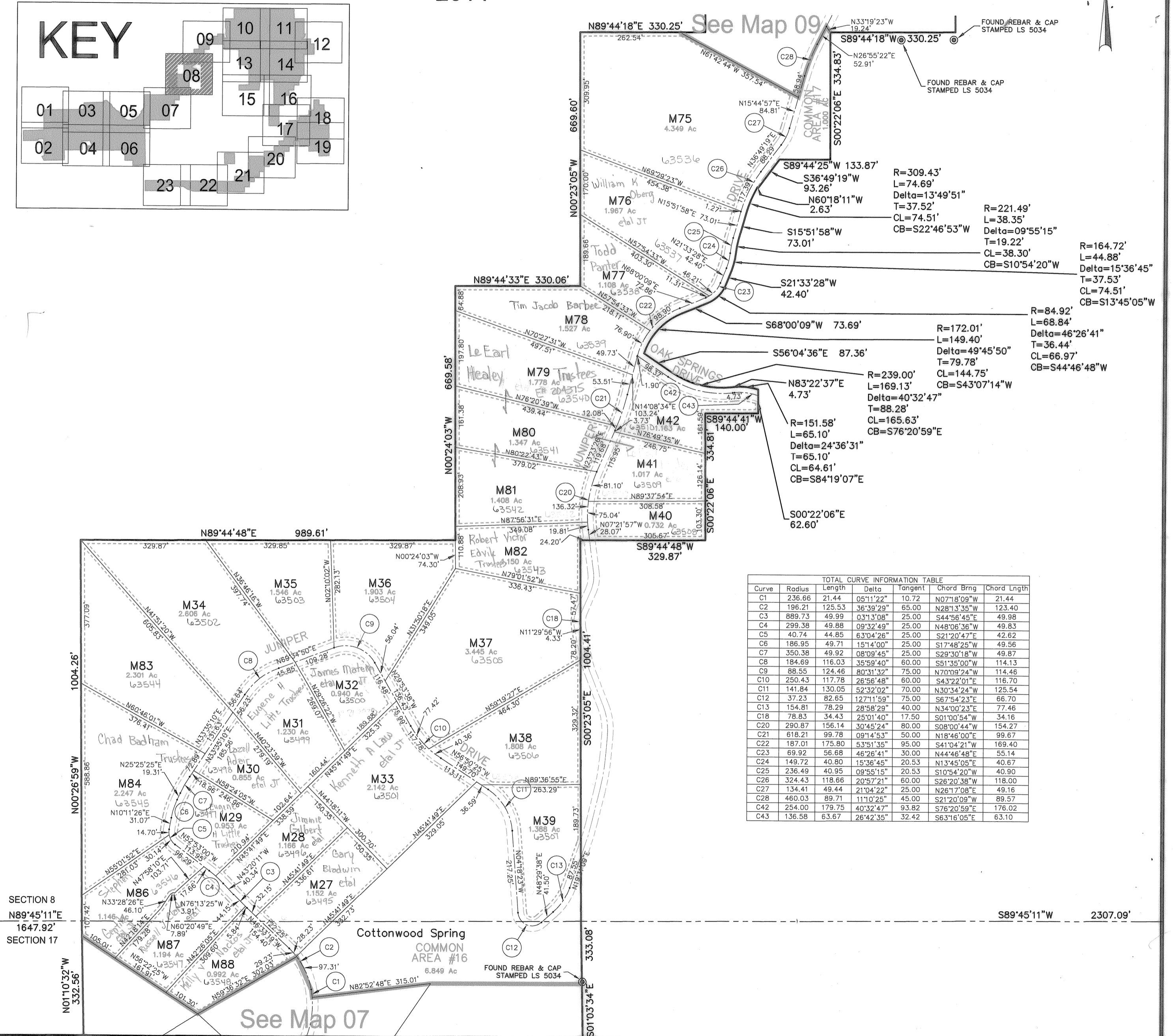
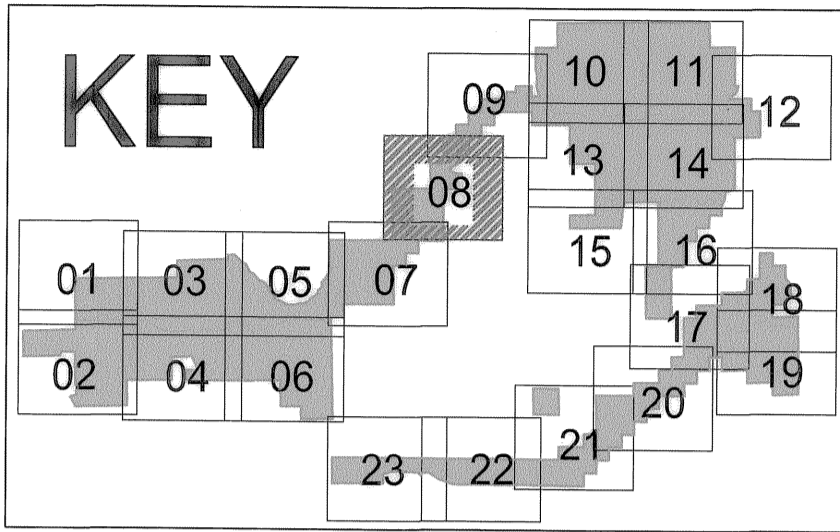
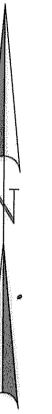


# Skyline Mountain Resort Subdivision

Located in Section 13, T.14 S., R.4 E., &  
Sections 8, 9, 10, 15, 16, 17, 18, 20 & 21, T.14 S., R.5 E., S.L.B. & M.  
Sanpete County, Utah  
2014



TOTAL CURVE INFORMATION TABLE						
Curve	Radius	Length	Delta	Tangent	Chord Brng	Chord Length
C1	236.66	21.44	05°11'22"	10.72	N07°18'09"W	21.44
C2	196.21	125.53	36°39'29"	65.00	N28°13'35"E	123.40
C3	889.73	49.99	03°13'08"	25.00	S44°56'45"E	49.98
C4	299.38	49.88	09°32'49"	25.00	N48°06'36"W	49.83
C5	40.74	44.85	63°04'26"	25.00	S21°20'47"E	42.62
C6	186.95	49.71	15°14'00"	25.00	S17°48'25"W	49.56
C7	350.38	49.92	08°09'45"	25.00	S29°30'18"W	49.87
C8	184.69	116.03	35°59'40"	60.00	S51°35'00"W	114.13
C9	88.55	124.46	80°31'32"	75.00	N70°09'24"E	114.48
C10	250.43	117.78	28°58'48"	60.00	S43°22'01"E	116.70
C11	141.84	130.05	52°32'02"	70.00	N30°34'24"W	125.54
C12	37.23	82.65	127°11'59"	75.00	S67°54'23"E	66.70
C13	154.81	78.29	28°58'29"	40.00	N34°00'23"E	77.46
C18	78.83	34.43	25°01'40"	17.50	S01°00'54"W	34.16
C20	290.87	156.14	30°45'24"	80.00	S08°00'44"W	154.27
C21	618.21	99.78	09°14'53"	50.00	N18°46'00"E	99.67
C22	187.01	175.80	53°51'35"	95.00	S41°04'21"W	169.40
C23	69.92	56.68	46°26'41"	30.00	N44°46'48"E	55.14
C24	149.72	40.80	15°36'45"	20.53	N13°45'05"E	40.67
C25	236.49	40.95	09°55'15"	20.53	S10°54'20"W	40.90
C26	324.43	118.66	20°57'21"	60.00	S26°20'38"W	118.00
C27	134.41	49.44	21°04'22"	25.00	N26°17'08"E	49.16
C28	460.03	89.71	11°10'25"	45.00	S21°20'09"W	89.57
C42	254.00	179.75	40°32'47"	93.82	S76°20'59"E	176.02
C43	136.58	63.67	26°42'35"	32.42	S63°16'05"E	63.10

REVISIONS	INITIAL AND DATE	NOTES	U.S.T.C. approval Date:	PLAT DEPARTMENT SANPETE COUNTY, UTAH	Section 8 T14S.R 5E. Section 17 T14S.R 5E.	book page 8
					drawn by: BLL date: 12/14	scale: 1"=200'