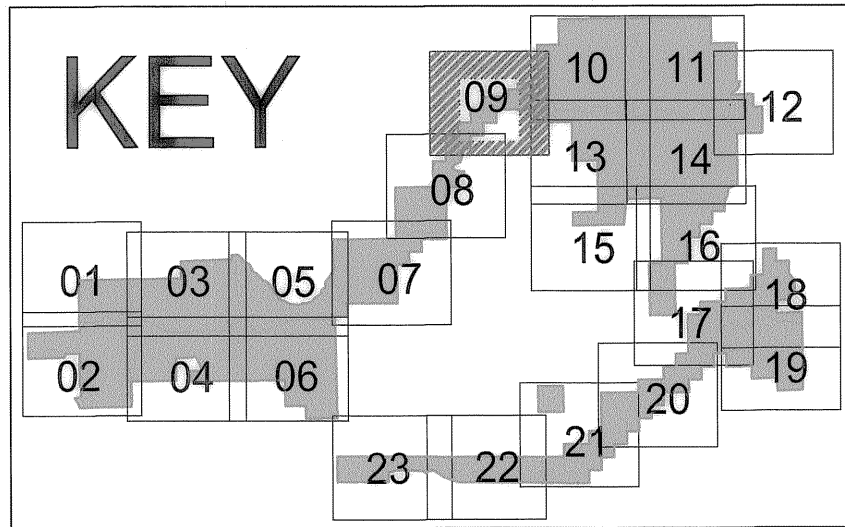


Skyline Mountain Resort Subdivision

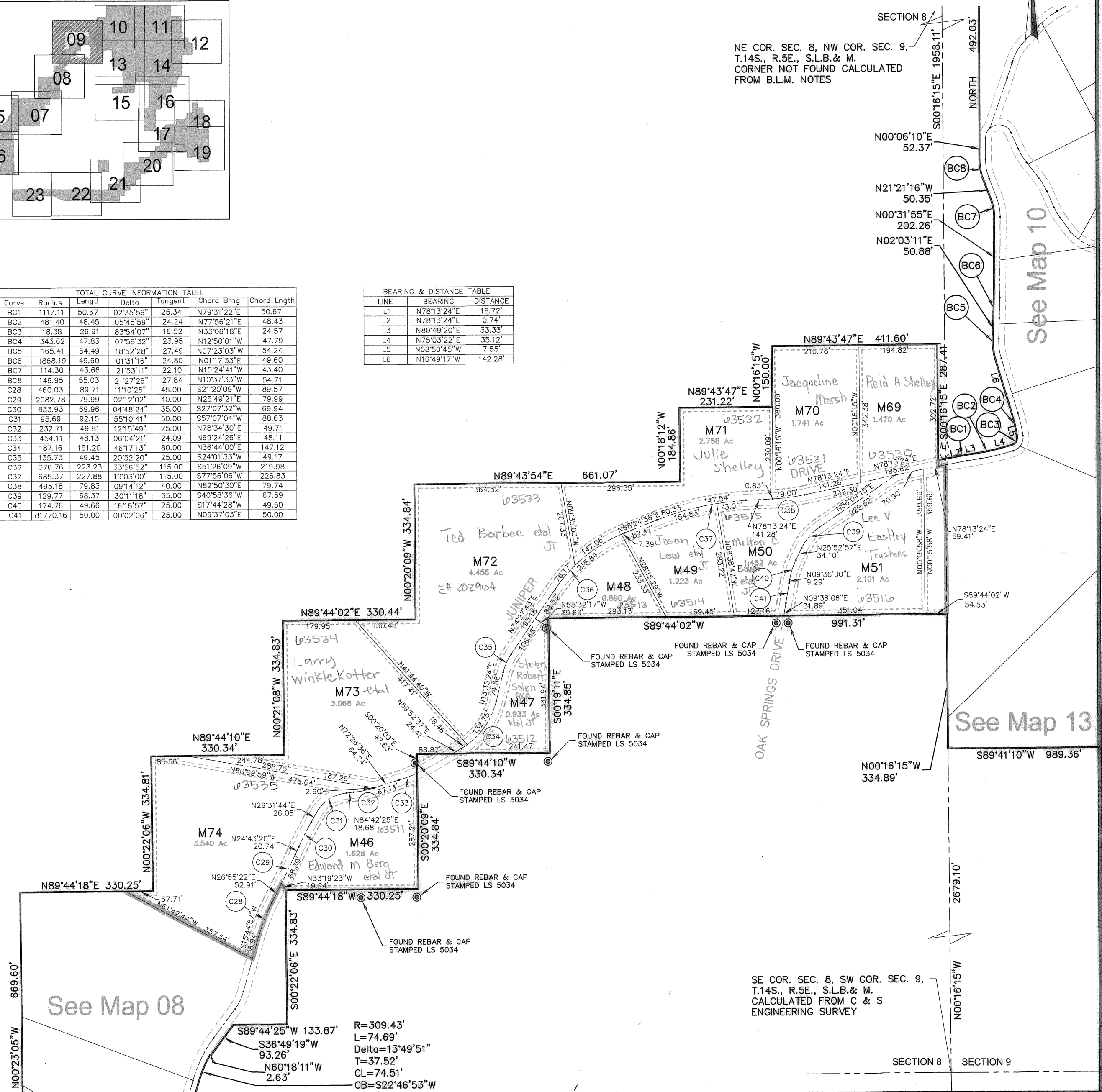
Located in Section 13, T.14 S., R.4 E., &
Sections 8, 9, 10, 15, 16, 17, 18, 20 & 21, T.14 S., R.5 E., S.L.B. & M.
Sanpete County, Utah
2014

Map 09



TOTAL CURVE INFORMATION TABLE						
Curve	Radius	Length	Delta	Tangent	Chord Brng	Chord Lngth
BC1	1117.11	50.67	02°35'56"	25.34	N79°31'22"E	50.67
BC2	481.40	48.45	05°45'59"	24.24	N77°56'21"E	48.43
BC3	18.38	26.91	83°54'07"	16.52	N33°06'18"E	24.57
BC4	343.62	47.83	07°58'32"	23.95	N12°50'01"W	47.79
BC5	165.41	54.49	18°52'28"	27.49	N07°23'03"W	54.24
BC6	1868.19	49.60	01°31'16"	24.80	N01°17'33"E	49.60
BC7	114.30	43.66	21°53'11"	22.10	N10°24'41"W	43.40
BC8	146.95	55.03	21°27'26"	27.84	N10°37'33"W	54.71
C28	460.03	89.71	11°10'25"	45.00	S21°20'09"W	89.57
C29	2082.78	79.99	02°12'02"	40.00	N25°49'21"E	79.99
C30	833.93	69.96	04°48'24"	35.00	S27°07'32"W	69.94
C31	95.69	92.15	55°10'41"	50.00	S57°07'04"W	88.63
C32	232.71	49.81	12°15'49"	25.00	N78°34'30"E	49.71
C33	454.11	48.13	06°04'21"	24.09	N69°24'26"E	48.11
C34	187.16	151.20	46°17'13"	80.00	N36°44'00"E	147.12
C35	135.73	49.45	20°52'20"	25.00	S24°01'33"W	49.17
C36	376.76	223.23	33°56'52"	115.00	S51°26'09"W	219.98
C37	685.37	227.88	19°03'00"	115.00	S77°56'06"W	226.83
C38	495.18	79.83	09°14'12"	40.00	N82°50'30"E	79.74
C39	129.77	68.37	30°11'18"	35.00	S40°58'36"W	67.59
C40	174.76	49.66	16°16'57"	25.00	S17°44'28"W	49.50
C41	81770.18	50.00	00°02'06"	25.00	N09°37'03"E	50.00

BEARING & DISTANCE TABLE		
LINE	BEARING	DISTANCE
L1	N78°13'24"E	18.72'
L2	N78°13'24"E	0.74'
L3	N80°49'20"E	33.33'
L4	N75°03'22"E	35.12'
L5	N08°50'45"W	7.55'
L6	N16°49'17"W	142.28'



SECTION 8
NE COR. SEC. 8, NW COR. SEC. 9,
T.14S., R.5E., S.L.B. & M.
CORNER NOT FOUND CALCULATED
FROM B.L.M. NOTES

SECTION 8 SECTION 9
SE COR. SEC. 8, SW COR. SEC. 9,
T.14S., R.5E., S.L.B. & M.
CALCULATED FROM C & S
ENGINEERING SURVEY

See Map 08

S89°44'25"W 133.87'
S36°49'19"W 93.26'
N60°18'11"W 2.63'

R=309.43'
L=74.69'
Delta=13°49'51"
T=37.52'
CL=74.51'
CB=S22°46'53"W

REVISIONS	INITIAL AND DATE	NOTES	U.S.T.C. approval Date:	PLAT DEPARTMENT SANPETE COUNTY, UTAH	Section 8 T14S.R 5E.	book page
						9
					drawn by: BLL	scale: 1"=200'
					date: 12/14	