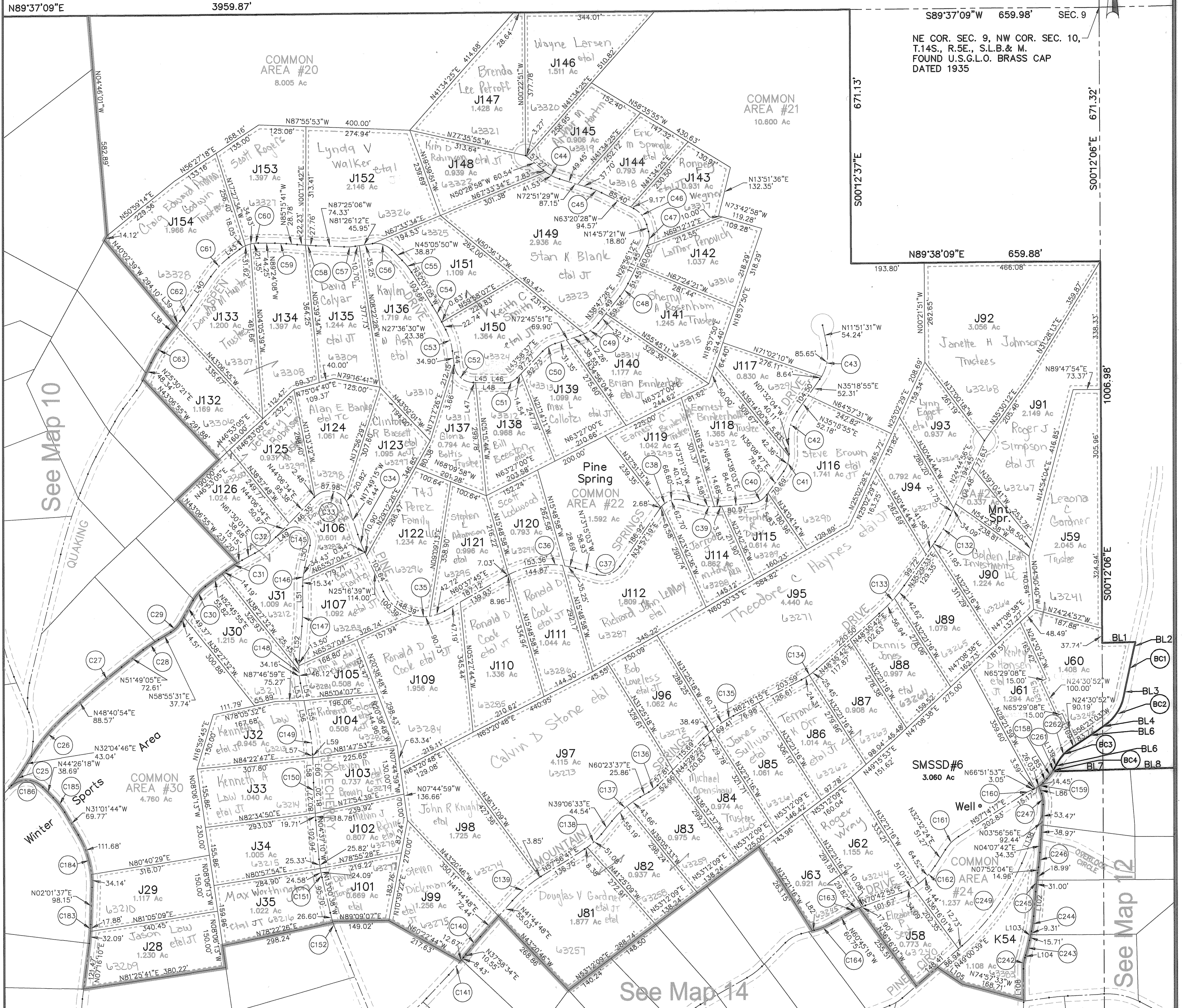


Skyline Mountain Resort Subdivision

Located in Section 13, T.14 S., R.4 E., &
Sections 8, 9, 10, 15, 16, 17, 18, 20 & 21, T.14 S., R.5 E., S.L.B. & M.
Sanpete County, Utah
2014

SEE MAP 12 FOR LINE AND CURVE DATA



REVISIONS	INITIAL AND DATE	NOTES	U.S.T.C. approval Date:	PLAT DEPARTMENT SANPETE COUNTY, UTAH	Section <u>9 T 14 S R 5 E</u> Section <u>10 T 14 S R 5 E</u>	book page <u>11</u>
					drawn by: <u>BLL</u>	
					date: <u>12/14</u>	
					scale: <u>1"=200'</u>	