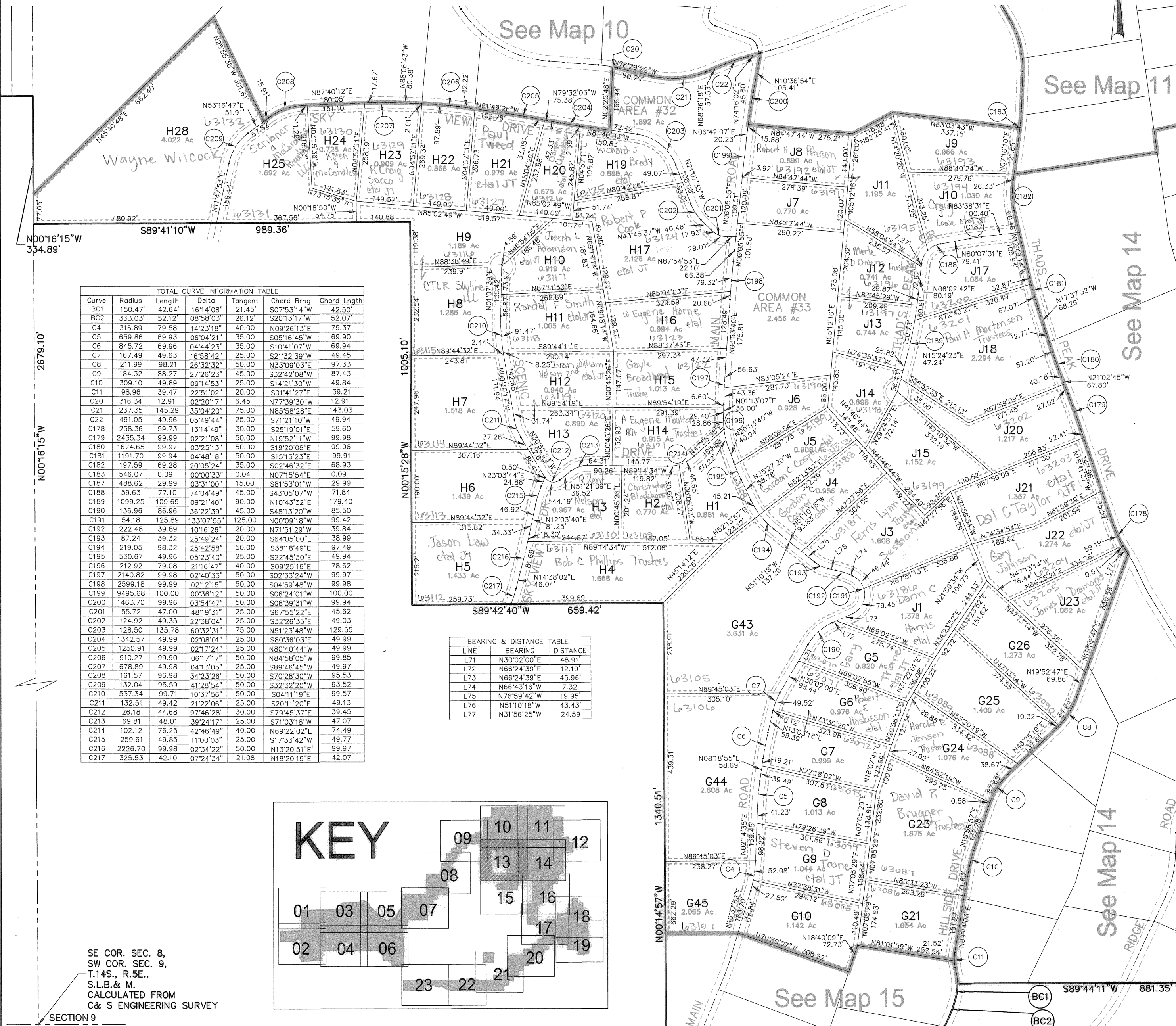


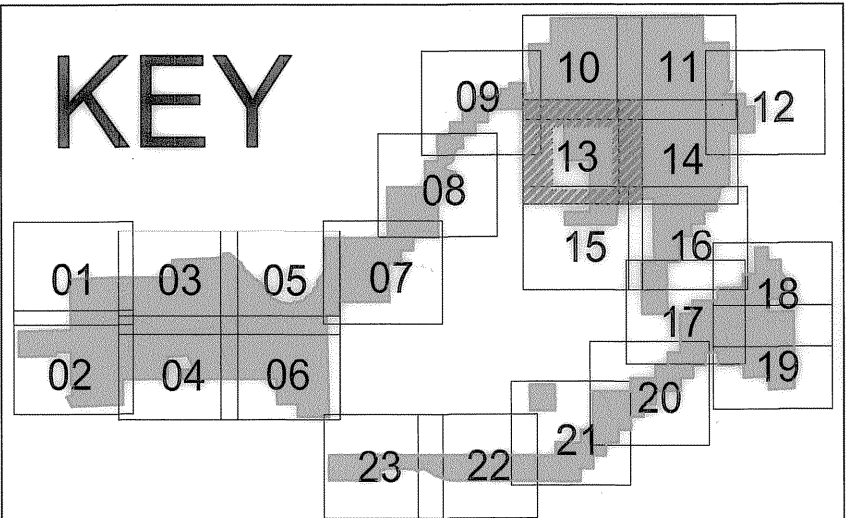
Skyline Mountain Resort Subdivision

Located in Section 13, T.14 S., R.4 E., &
Sections 8, 9, 10, 15, 16, 17, 18, 20 & 21, T.14 S., R.5 E., S.L.B. & M.
Sanpete County, Utah
2014



Curve	Radius	Length	Delta	Tangent	Chord Brg	Chord Lngth
BC1	150.47	42.64	16°14'08"	21.45	S07°53'14"W	42.50
BC2	333.03	52.12	08°58'03"	26.12	S20°13'17"W	52.07
C4	316.89	79.58	14°23'18"	40.00	N09°26'13"E	79.37
C5	659.86	69.93	06°04'21"	35.00	S05°16'45"W	69.90
C6	845.72	69.96	04°44'23"	35.00	S10°41'07"W	69.94
C7	167.49	49.63	16°58'42"	25.00	S21°32'39"W	49.45
C8	211.99	98.21	26°32'32"	50.00	N33°09'03"E	97.33
C9	184.32	88.27	27°26'23"	45.00	S32°42'08"W	87.43
C10	309.10	49.89	09°14'53"	25.00	S14°21'30"W	49.84
C11	98.96	39.47	22°51'02"	20.00	S01°41'27"E	39.21
C20	316.34	12.91	02°20'17"	6.45	N77°39'30"W	12.91
C21	237.35	145.29	35°04'20"	75.00	N85°58'28"E	143.03
C22	491.05	49.96	05°49'44"	25.00	S71°21'10"W	49.94
C178	258.36	59.73	13°14'49"	30.00	S25°19'01"E	59.60
C179	2435.34	99.99	02°21'08"	50.00	N19°52'11"W	99.98
C180	1674.65	99.97	03°25'13"	50.00	S19°20'08"E	99.96
C181	1191.70	99.94	04°48'18"	50.00	S15°13'23"E	99.91
C182	197.59	69.28	20°05'24"	35.00	S02°46'32"E	68.93
C183	546.07	0.09	00°00'33"	0.04	N07°15'54"E	0.09
C187	488.62	29.99	03°31'00"	15.00	S81°53'01"W	29.99
C188	59.63	77.10	74°04'49"	45.00	S43°05'07"W	71.84
C189	1099.25	109.69	09°21'40"	90.00	N10°43'32"E	179.40
C190	136.96	86.96	36°22'39"	45.00	S48°13'20"W	85.50
C191	54.18	125.89	133°07'55"	125.00	N00°09'18"W	99.42
C192	222.48	39.89	10°16'26"	20.00	N71°51'29"W	39.84
C193	87.24	39.32	25°49'24"	20.00	S64°05'00"E	38.99
C194	219.05	98.32	25°42'58"	50.00	S38°18'49"E	97.49
C195	530.67	49.96	05°23'40"	25.00	S22°45'30"E	49.94
C196	212.92	79.08	21°16'47"	40.00	S09°25'16"E	78.62
C197	2140.82	99.98	02°40'33"	50.00	S02°33'24"W	99.97
C198	2599.18	99.99	02°12'15"	50.00	S04°59'48"W	99.98
C199	9495.68	100.00	00°36'12"	50.00	S06°24'01"W	100.00
C200	1463.70	99.96	03°54'47"	50.00	S08°39'31"W	99.94
C201	55.72	47.00	48°19'31"	25.00	S67°55'22"E	45.62
C202	124.92	49.35	22°38'04"	25.00	S32°26'35"E	49.03
C203	128.50	135.78	60°32'31"	75.00	N51°23'48"W	129.55
C204	1342.57	49.99	02°08'01"	25.00	S80°36'03"E	49.99
C205	1250.91	49.99	02°17'24"	25.00	N80°40'44"W	49.99
C206	910.27	99.90	06°17'17"	50.00	N84°58'05"W	99.85
C207	678.89	49.98	04°13'05"	25.00	S89°46'45"W	49.97
C208	161.57	96.98	34°23'26"	50.00	S70°28'30"W	95.53
C209	132.04	95.59	41°28'54"	50.00	S32°32'20"W	93.52
C210	537.34	99.71	10°37'56"	50.00	S04°11'19"E	99.57
C211	132.51	49.42	21°22'06"	25.00	S20°11'20"E	49.13
C212	26.18	44.68	97°46'28"	30.00	S79°45'37"E	39.45
C213	69.81	48.01	39°24'17"	25.00	S71°03'18"W	47.07
C214	102.12	76.25	42°46'49"	40.00	N69°22'02"E	74.49
C215	259.61	49.85	11°00'03"	25.00	S17°33'42"W	49.77
C216	2226.70	99.98	02°34'22"	50.00	N13°20'51"E	99.97
C217	325.53	42.10	07°24'34"	21.08	N18°20'19"E	42.07

LINE	BEARING	DISTANCE
L71	N30°02'00"E	48.91
L72	N66°24'39"E	12.19
L73	N66°24'39"E	45.96
L74	N66°43'16"W	7.32
L75	N76°59'42"W	19.95
L76	N51°10'18"W	43.43
L77	N31°56'25"W	24.59



SE COR. SEC. 8,
SW COR. SEC. 9,
T.14S., R.5E.,
S.L.B. & M.
CALCULATED FROM
C & S ENGINEERING SURVEY

REVISIONS	INITIAL AND DATE	NOTES	U.S.T.C. approval Date:	PLAT DEPARTMENT SANPETE COUNTY, UTAH	book page
					Section 9 T14SR5E 13
					drawn by: BLL date: 12/14 scale: 1"=200'