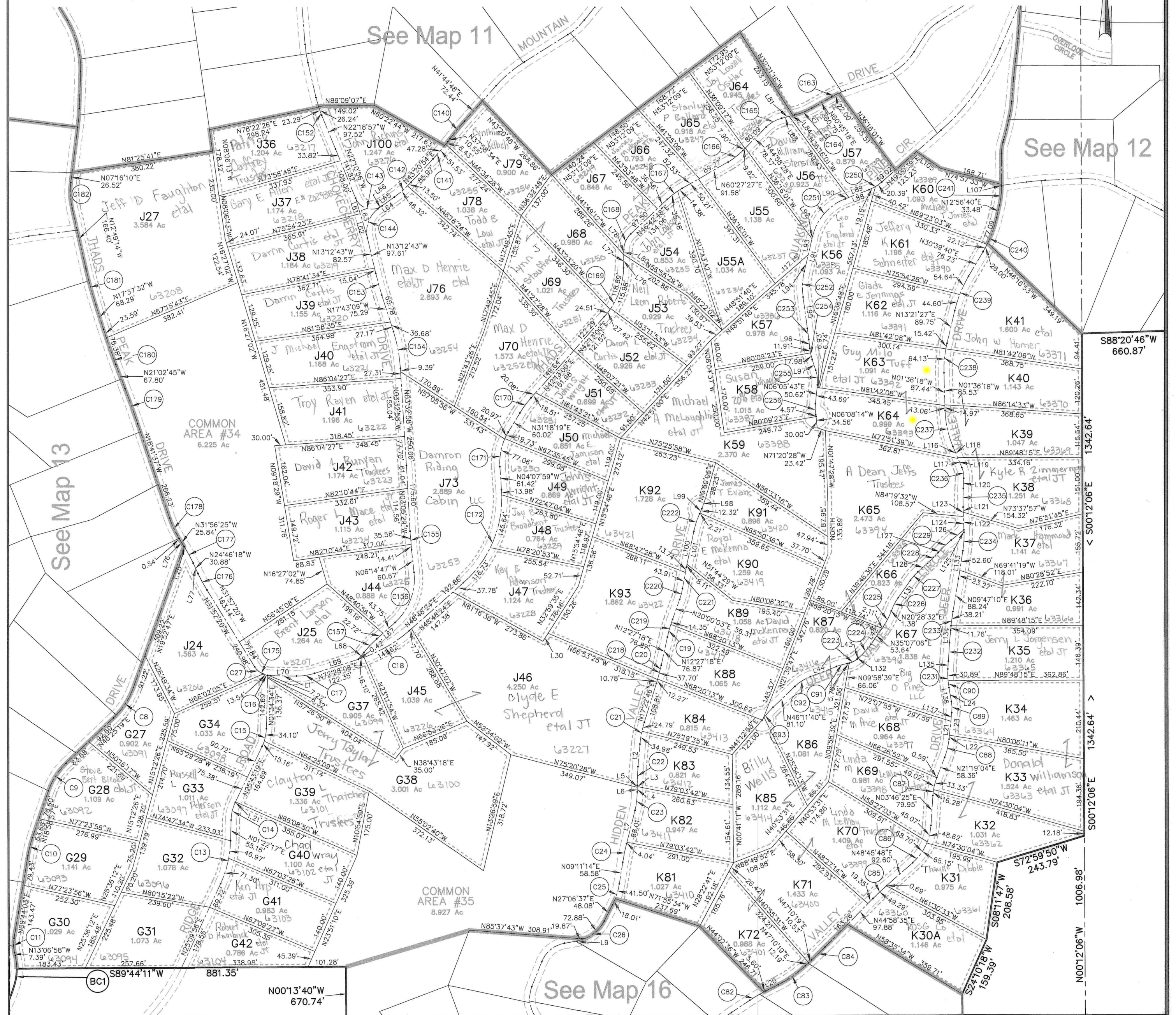


# Skyline Mountain Resort Subdivision

Located in Section 13, T.14 S., R.4 E., &  
Sections 8, 9, 10, 15, 16, 17, 18, 20 & 21, T.14 S., R.5 E., S.L.B. & M.  
Sanpete County, Utah  
2014

Map 14

SEE MAP 15 FOR BEARING AND CURVE DATA



REVISIONS	INITIAL AND DATE	NOTES	U.S.T.C. approval Date:	PLAT DEPARTMENT SANPETE COUNTY, UTAH	Section <u>9</u> T <u>14S</u> R <u>5E</u>	book page <u>14</u>
					drawn by: <u>BLL</u> date: <u>12/14</u>	scale: <u>1"=200'</u>