

Skyline Mountain Resort Subdivision

Located in Section 13, T.14 S., R.4 E., &
Sections 8, 9, 10, 15, 16, 17, 18, 20 & 21, T.14 S., R.5 E., S.L.B. & M.
Sanpete County, Utah
2014

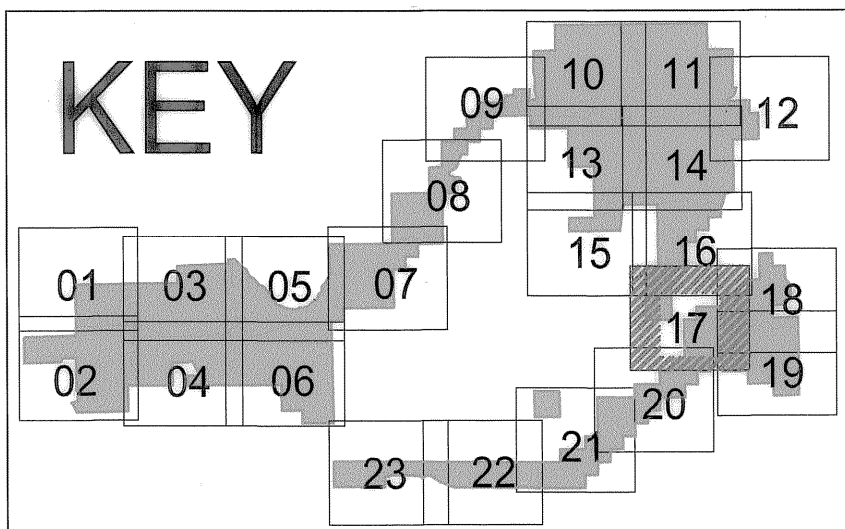
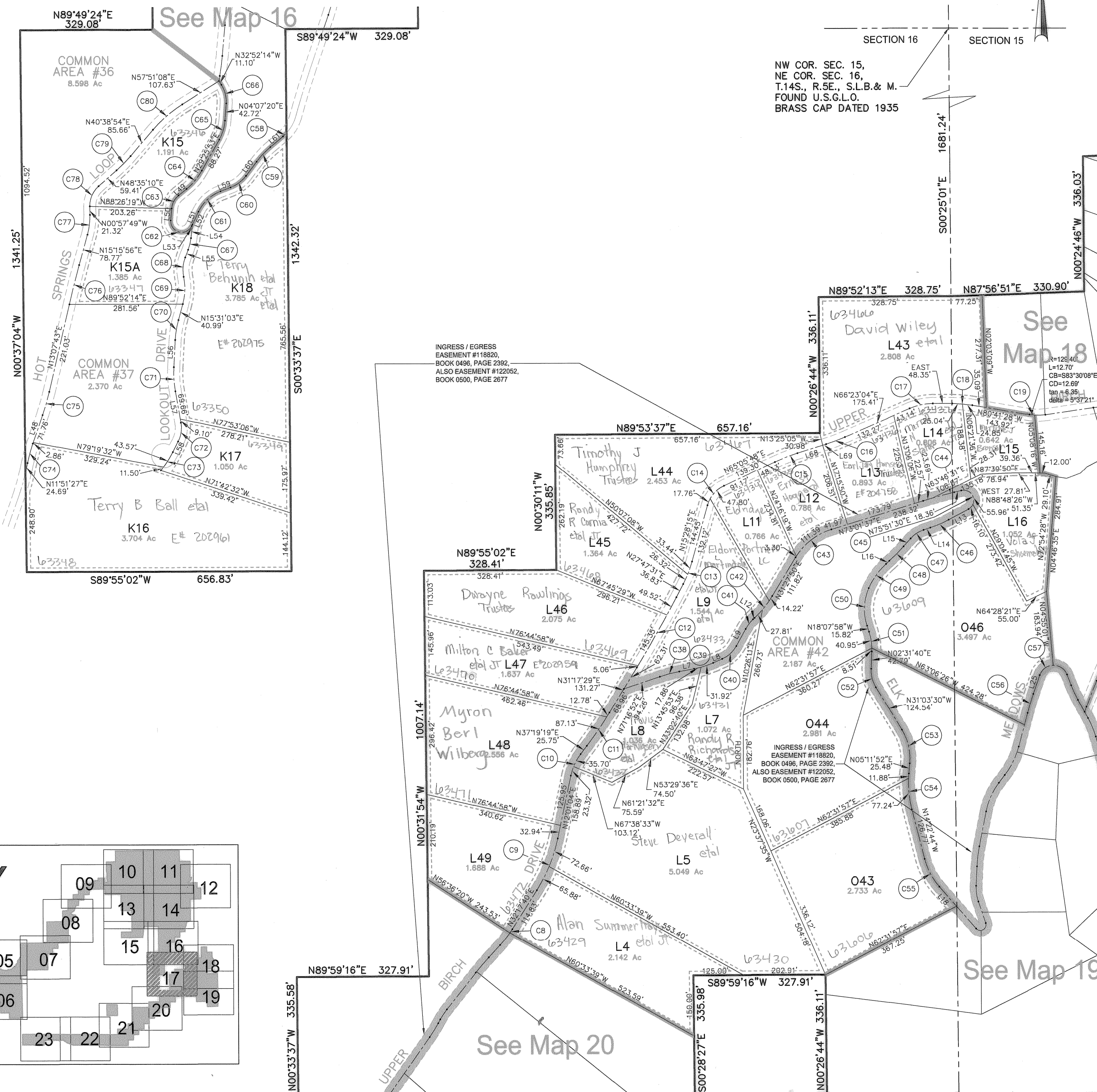
BOOK

PAGE

Map 17



SEE MAP 17A FOR LINE AND CURVE DATA



REVISIONS	INITIAL AND DATE	NOTES	U.S.T.C. approval Date:	PLAT DEPARTMENT SANPETE COUNTY, UTAH	book page
					Section 16 T.14S.R.5E
					drawn by: BLL date: 12/14 scale: 1"=200'